

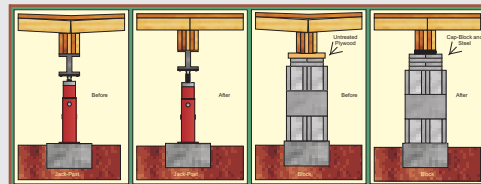
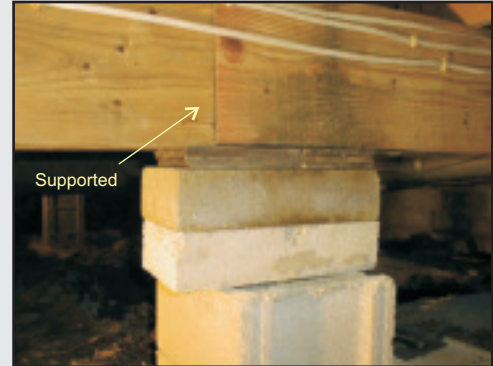
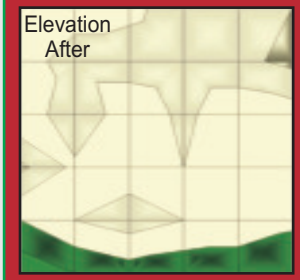
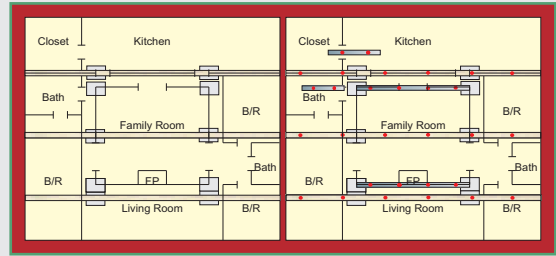
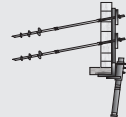


United Structural Systems Ltd., Inc.

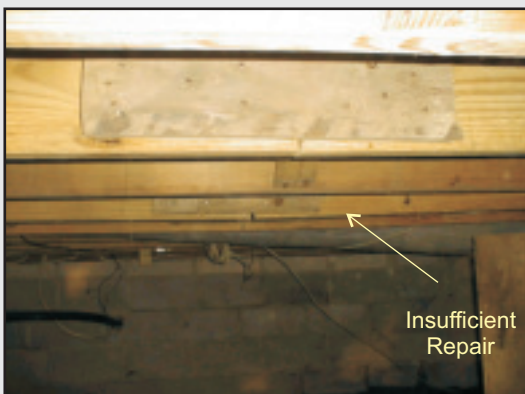
www.IFIXFOUNDATIONS.com

(800) 555-8970 • Fax (812) 280-6555

Lexington (859) 254-7700 • Charleston (304) 346-7777 • Cincinnati (513) 561-0300



Number	Shot #1	Shot #2	Difference	Number	Shot #1	Shot #2	Difference
0	0	0	0	30	-3/8	3/2	1 1/8
1	-1 3/8	-1/4	1 1/8	31	-4 5/8	-3/4	3 7/8
2	-1/4	-1/4	0	32	-2 7/8	-3/4	2 1/8
3	-3 7/8	-3/4	3 1/8	33	-4	-3/4	3 1/4
4	-1 1/8	-3/8	3/4	34	-3 3/4	-1/2	3 1/4
5	-4 1/2	-3/4	3 3/4	35	-3	-3/8	2 5/8
6	-3	-3/4	2 1/4	36	-4 1/2	-3/4	3 3/4
7	-4 1/8	-7/8	3 1/4	37	-3 1/2	-3/8	3 1/8
8	-2 3/4	-7/8	1 7/8	38	-1 1/2	-1/4	1 1/4
9	-3 7/8	-7/8	3	39	-4	-1/2	3 1/2
10	-3 3/8	-1	2 3/8	40	-4 1/8	-1/2	3 5/8
11	-3 1/2	-1 1/8	2 3/8	41	-3	-1/4	2 3/4
12	0	-1/8	-1/8	42	-3 3/4	-1/2	3 1/4
13	3/8	0	-3/8	43	-2 5/8	-1/4	2 3/8
14	-5	-1	4	44	-3 3/4	-3/8	3 3/8
15	-2 1/4	-1 1/8	1 1/8	45	-3/8	3/8	3/4
16	-2 1/8	-3/8	1 3/4	46	-3 1/2	-1/2	3
17	-2	7/8	1 1/8	47	-2 7/8	-3/8	2 1/2
18	-1 1/2	-1/8	1 3/8	48	-1 3/8	1/4	1 5/8
19	-2 7/8	-1/8	2 3/4	49	-1 1/4	1/2	3/4
20	-4 1/4	1/2	3 3/4	50	-2 3/4	1/8	2 7/8
21	-2 7/8	-1/4	2 5/8	51	-2 1/2	-1/4	2 1/4
22	-2 1/2	0	2 1/2	52	-2 3/4	-1/8	2 5/8
23	-2 7/8	-1/8	2 3/4	53	-1 5/8	0	1 5/8
24	-4 1/2	-5/8	3 7/8	54	-4 1/2	-7/8	3 5/8
25	-3 7/8	-3/8	3 1/2	55	-3	-1/2	2 1/2
26	-2 1/2	-1/8	2 3/8	56	-1 3/8	-1/8	1 1/4
27	-2 5/8	-1/4	2 3/8	57	-3/8	3/8	3/4
28	-2 7/8	-1/2	2 3/8	58	1/2	1/2	0



Structure Age: Approx. 20 Years

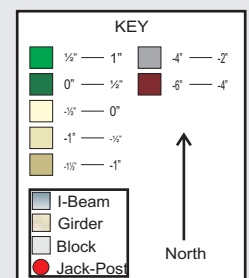
Fill: Gradient Soil

of Column Supports Installed: 34

Average Spacing of Columns: 8 feet

Average Height of Lift: 2"

A loft was added to the center of the structure, transferring load to existing non-loadbearing walls. Also work performed by previous contractor to gain access for installation of plumbing comprised the structural integrity of the floor joists. Structure's main beams settled approx. -4". Column support posts, I-beams, concrete block, and concrete footings were installed to stabilize the interior load-bearing beams. Overall lift was sufficient enough to stabilize structure without causing any additional damage.



February 15, 2001